



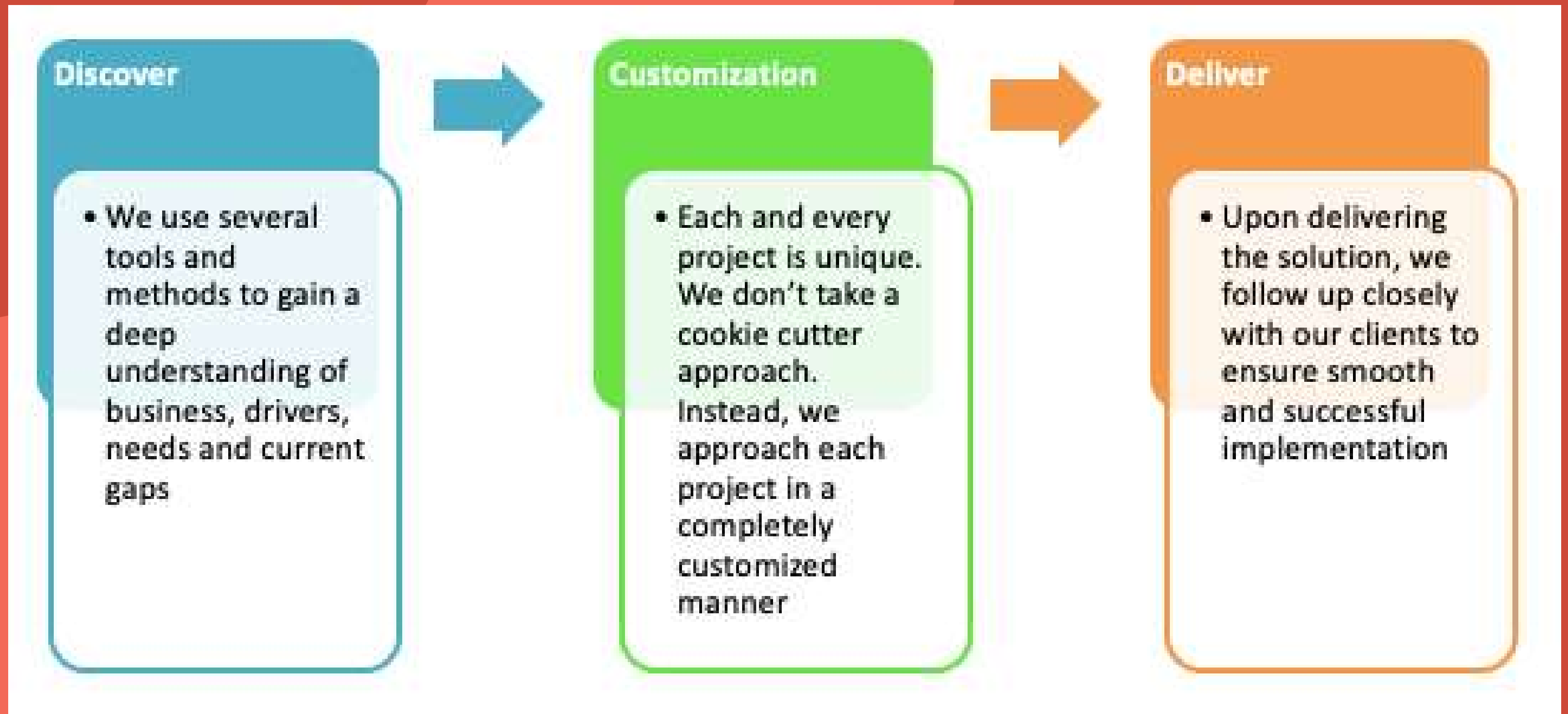
**PEOPLE LINK  
CONSULTING**

# **Enhancing Business Value through People**

# Our Value Proposition

We partner with our clients to develop and implement specific, practical and effective solutions that work for them - doing it with focus and joy *"Ikigai"*.

# Our Approach



The background is a solid dark blue. There are four large decorative circles: a blue ring in the top-left, a solid orange circle in the top-right, a solid orange circle in the bottom-left, and a blue ring in the bottom-right.

# Our Strategic Partnership

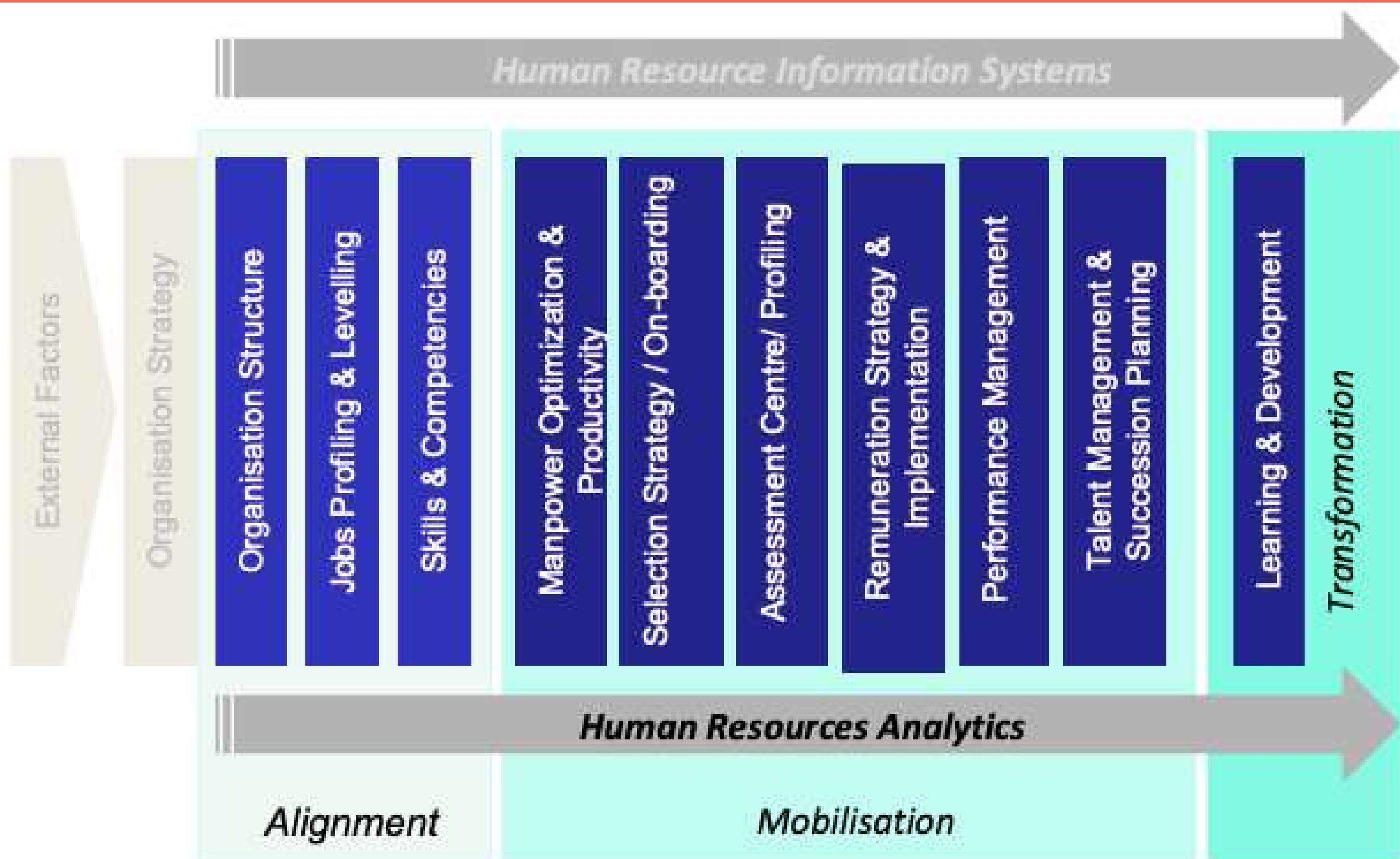
Jigsaw@Work, UK

Harrison Assessment

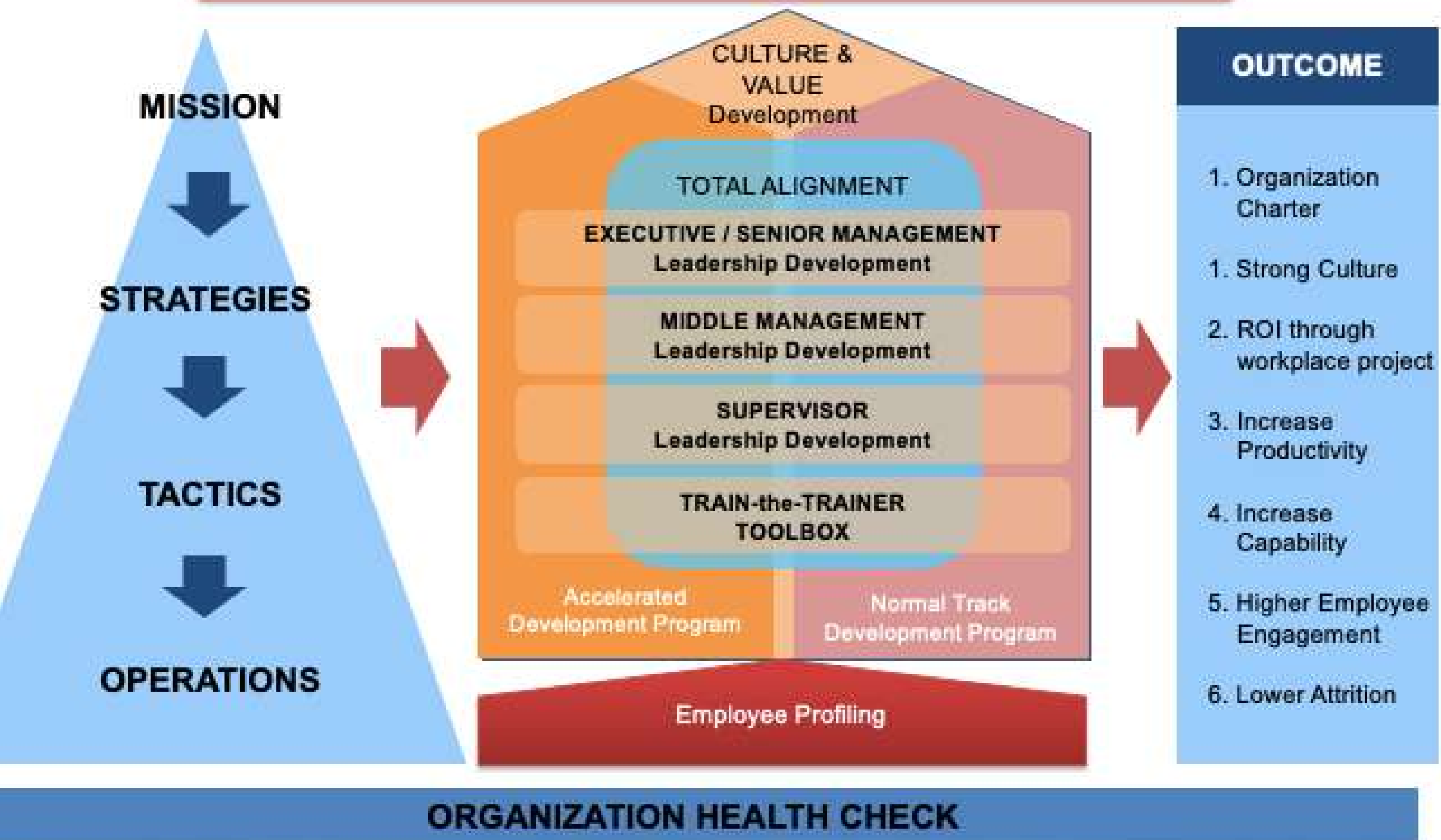
Morphos International, Singapore

Strategyc, Malaysia

# Our Services



**LEADERSHIP** drives the **CULTURE** and that drives **PERFORMANCE**.



**Our  
Differentiator :  
Outcome  
Focused**

**OUTCOME**

1. Organization Charter
1. Strong Culture
2. ROI through workplace project
3. Increase Productivity
4. Increase Capability
5. Higher Employee Engagement
6. Lower Attrition

**ORGANIZATION HEALTH CHECK**

# Constant Enhancement

OUR PRODUCTIVITY SYSTEMS (WEB & APP BASED)

Activity Listing

Web Based

| Functions                     | Activities                        | Description  | Type | Frequency | Volume of Task | Jan | Feb | Mar | Apr | May | Jun |
|-------------------------------|-----------------------------------|--|------|-----------|----------------|-----|-----|-----|-----|-----|-----|
| IT Backup & Recovery Services | IT Service Request - Level 1      | Answer call, troubleshoot, onsite support  | Core | Daily     | 1              | 5   | 5   | 5   | 5   | 5   | 5   |
| IT Desktop Management         | IT Escalation                     | Escalate the issue to the next level<br>Prepare documentation  | Core | Daily     | 1              | 2   | 2   | 2   | 2   | 2   | 2   |
| IT Others                     | IT Post Fulfillment/Case Recovery | Collate/Produce/Process/Review/Monitor timely and accurate backcharging to Business<br>Investigate and advise resolution to disputes from Business | Core | Daily     | 1              | 1   | 1   | 1   | 1   | 1   | 1   |

ACTIVITIES

22 Oct

- Done** #100807 Test log & activity template  
11:23 AM
- Open** #100848 Workflow Testing  
11:00 AM
- Done** #100849 Aron Maxwala Dosa Park City  
1:00 AM

ACTIVITY DETAILS

Check in Camera Map

Team: Team A Sample  
User: Preston Lim  
Customer / Location: Aron Maxwala Dosa Park City  
Contact: undefined

Type: Sites  
Status: Open  
Planned Date: 22/10/2018  
Planned Time: 1:00 AM - 2:00 AM  
Planned Location: Dosa Park City, Kuala Lumpur, Federal Territory of Kuala Lumpur, 12200, Malaysia

Created On: 22/10/2018 00:24:27  
Created By: Preston Lim

App Based

DEMO - DELIVERY REPORT

Delivery Report

STATUS: Active Success Fail

RECIPIENT NAME: Aron Maxwala Dosa Park City

RECIPIENT ID: [Redacted]

RECIPIENT SIGNATURE: [Redacted]

# OUR CLIENTS





# What Our Clients Say

The People Link team was committed, flexible and collaborative. They advised us what was needed and worked with us on a tight timeline. They were willing to transfer knowledge and upskill the internal team to continue the following phases. We are happy with the quality of the deliverables

- Redza Goh, CEO Petronas ICT

In the past 3 years, we had opportunity to engage Peggy & her team in a few of our Human Capital projects (i.e. HC Organisation Integration, Change Management, Productivity and Job Evaluation). They have been very reliable and dedicated in delivering the objectives. They have demonstrated great professionalism and technical know-how. They told us "To People Link, the best is always not good enough. We continue to strive for better." This makes it a real pleasure to work with them

- David Hoong Senior Director, Human Capital F&N Holdings Berhad

Our experience working with PeopleLink's team for the past couple of years have always been a positive one. We were impressed with PeopleLink level of service where passion, efficiency and commitment are their key strengths. Working with Peggy has also been a fantastic experience. Her dedication, strong integrity values and desire to exceed expectations makes it such a pleasure to work with. It has been a great partnership and I would welcome the opportunity to work with them again

- Jessie Ku, Head Group Human Resources

Peggy provided practical advice and solutions. She went the extra miles to do beyond for us by working closely with the internal team till the wee hours to ensure the deliverables exceed the stakeholders' requirements. We are really impressed with her knowledge, dedication and quality of deliverables

- Ong Jue Lean, Head Rewards & Performance DRB Hicom Group.

Following our initial roll-out of Jigsaw, we noticed that people were much more aware of themselves and their impact on others. Through learning about the different "colours", they appreciated that everybody is different and that this is not a source of weakness, but one of strength. Now people know they may need to adapt their behaviors in order to interact with others and we believe this has impacted on teamwork, communication and strengthened relationships overall

- Jane Lee, Manager Performance Management & Career Development DUBAL

# We LOVE What We Do



# Meet Our Team



PEGGY LIEW

Partner & Managing Consultant



NICK RANDALL

Senior Learning & Development  
Consultant



AZLIZA SANIMIN

Consultant



Jeremy Joel

Associate Consultant



# Let's Connect!



@PeopleLink.MY

PHONE

+6019-2388788

EMAIL

[peggy@peoplelink.com.my](mailto:peggy@peoplelink.com.my)

[www.peoplelink.com.my](http://www.peoplelink.com.my)